

Pinnacles Visitor Center & Maintenance Facility

PINNACLES NATIONAL MONUMENT, CALIFORNIA



SIZE

6712 sf

ESTIMATED COST

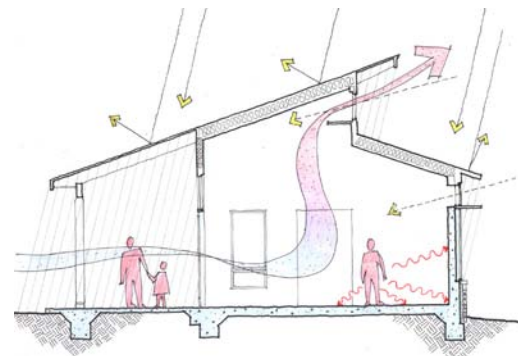
\$3.2 million

REFERENCE

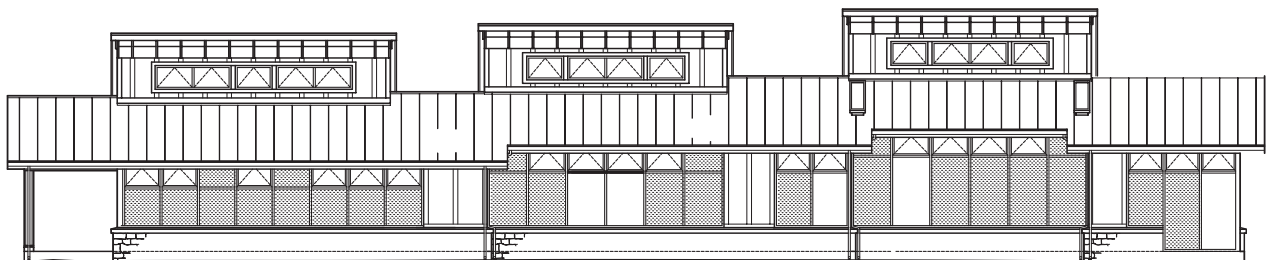
Jodie Peterson,
Project Manager
National Park Service
Denver, CO
303.969.2393

DESCRIPTION

The Visitor Contact Station is one of several new buildings Siegel & Strain designed for Pinnacles National Monument in central California. The building will house exhibits, staff offices, and a comfort station. The entire project is off the grid, therefore requiring special attention to energy efficiency. Means of reducing energy use include daylighting, efficient lighting and lighting controls, highly efficient heating and cooling, natural ventilation, as well as the use of a trombe wall to passively heat and cool the spaces. All electricity will be produced on site by a photovoltaic system. Further, this building is being designed to meet LEED™ Gold standards. Strategies for this combine the energy saving features with stormwater management, water efficient landscaping, local and regional materials, low-emitting materials and certified wood, amongst other measures.



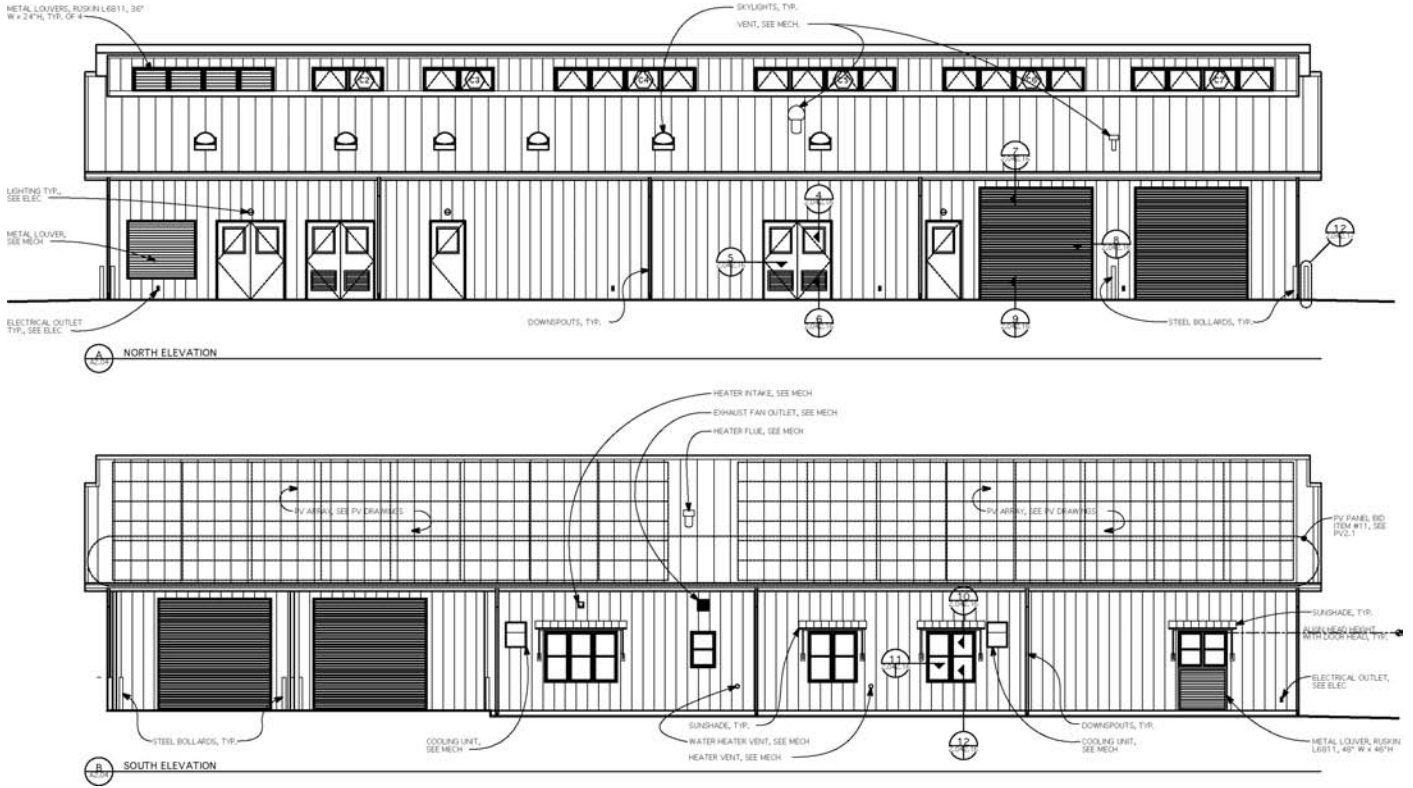
^ Passive Cooling Strategies



^ South Elevation with Trombe Wall

Pinnacles Fire / Search & Rescue Building

PINNACLES NATIONAL MONUMENT, CALIFORNIA



^ Pinnacles Fire / Search & Rescue Building elevations

DESCRIPTION

This remote facility incorporates the two main functions of Fire / Search & Rescue along with a workshop, electricity generation, storage, and staff facilities. This building is "off the grid" and was designed to maximize sun exposure for the photovoltaic array that provides all of the building's electricity while allowing for natural daylighting and ventilation to decrease the usage of electricity.

Designed on a tight budget, the building is a simple pre-engineered structure with a long central clerestory. The clerestory increases daylighting, improves natural ventilation, and provides more surface area for south facing photovoltaic panels.

Pinnacles Fire / Search & Rescue Building floor plan >

