

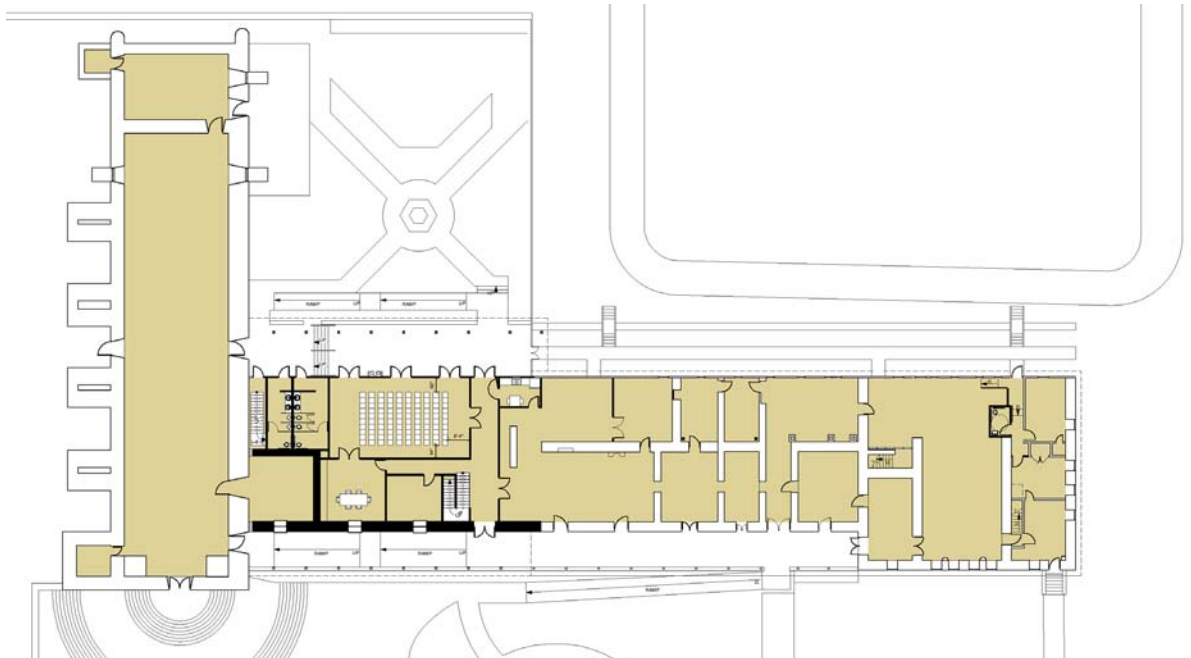
# Mission San Jose

FREMONT, CALIFORNIA



**SIZE**  
3500 sf approx (new project)

**COST**  
\$3.5 estimated



## DESCRIPTION

Mission San Jose is one of the twenty-one Franciscan Missions that extend from San Diego to Sonoma. Founded in 1797 the substantial adobe compound was destroyed by an earthquake in 1868. Siegel & Strain was asked to prepare a design for a 3,500 sf structure to link the Mission Church (reconstructed adobe, 1985) with a remnant adobe museum housed in the original Convento. This new infill structure must strictly

adhere to the design standards set by the historic buildings while housing all the functions required to make the complex functional today. The project incorporates a small caterer's kitchen, assembly space, restrooms and library while also establishing an ADA accessible link between the existing buildings and the site. The Mission Foundation is currently fund raising for an estimated \$3.5 million construction budget.